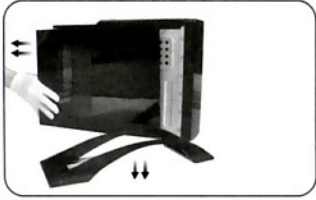


The instruction of 60 series structure assemble



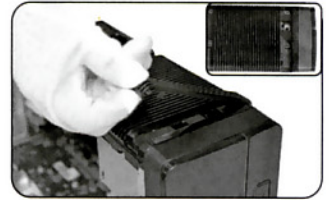
1: Takes down the foot Twists off the screw on the rearpanel to take down the side panel



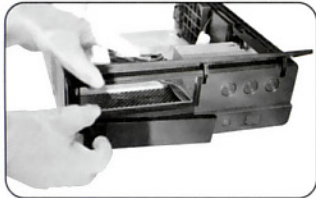
2: Lies the case on the tabletop Twists off two screws on the 5"25 bay



3: Backward pulls the 5"25 on backward to take out



4: Install and uninstall power supply may take out of the obstruct piece on the top panel



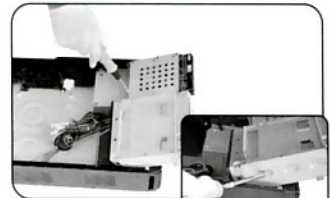
5: Opens revolving to turn the gate to dismount the CD drive(S601)



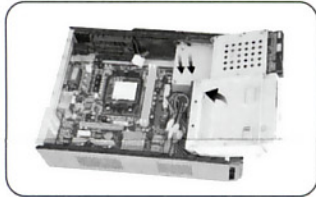
6: Puts slanting 5"25 bay revolution axis position on the rack



7: Installs the hard disk



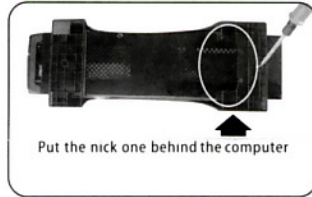
8: Installs CD drive



9: Installs the motherboard

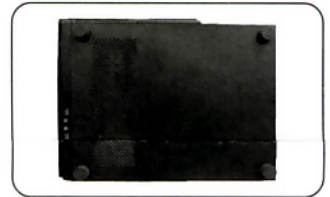


10: Cages on the screw 5"25 revolving to the rack, and installs VGA card



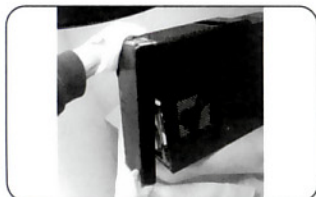
Put the nick one behind the computer

11. Lock the foot after (assemble the side panel)



12. Put 4 feet on the four corners in right position when the case is in horizon(S602 Only)

When install fix big Micro motherboard (9.6"*9.6"/244*244mm)
Need to assemble PSU on front of plate as following steps:



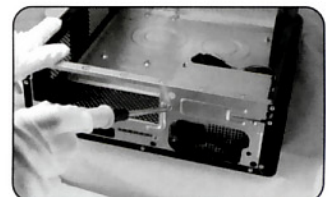
1: Take off the front panel



2: Remove 2pcs screw, take down power supply



3. Pull for ward the cable



4. Assemble the power supply on the front plate and lock by 3pcs screw